

**ShinewayTech®** MTP-200X series is the compact multi-functional platform, with 8 inch high-resolution touch screen, which are specially designed for FTTx/WAN applications and can meet all test requirements of installers, contractors and service operators during network installation, construction, maintenance and troubleshooting. It is convenient and accurate for auto/manual testing, multi-wavelength testing and multifunctional analysis.



**ShinewayTech**

Hand-held High Performance OTDR

# MTP-200X

**Series**

## Multi-Function and High Performance OTDR Testing

- Dynamic Range up to 50dB
- Short zone: EDZ 0.8m, ADZ 4m
- Auto/Manual test and analysis
- Multi-wavelength testing
- Visual Fault Locator function
- In-Line test and through Splitter test (1625/1650nm with filter)
- OTDR Module up to four wavelengths, SM/MM Option
- Fault locating, fiber length/loss/return loss measurement, connector/ splice/ splitter/ macro bend/fiber-end detection
- GR-196-CORE (.SOR) file format
- SOR and JPG file format
- Flexible file Naming



## Optimized Platform Performance

- Lightweight, 1.5kg including battery
- 8 inch touch screen
- High strength protect horn
- Excellent Man-Machine interface for easy operation
- Optimized power management: 10 hours continuous operation
- Remote/local control by PC (Optional)



## High Resolution 8 inch Color Touch Screen

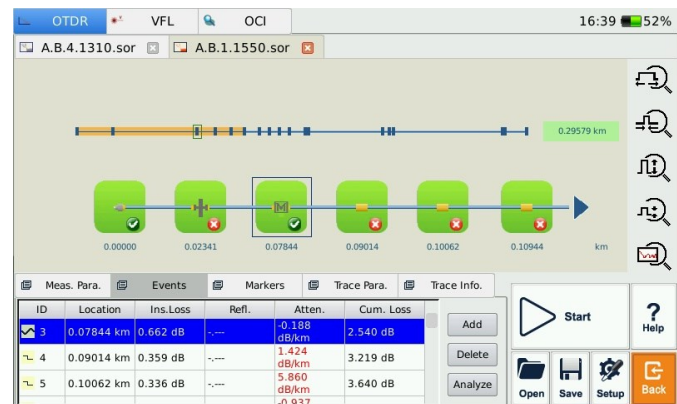
- 8 inch touch screen, damp-dust-shock proof
- Quick response, clear display and convenient operation.



## Link Image (LM100) – REMOVING THE COMPLEXITY FROM OTDR TESTING

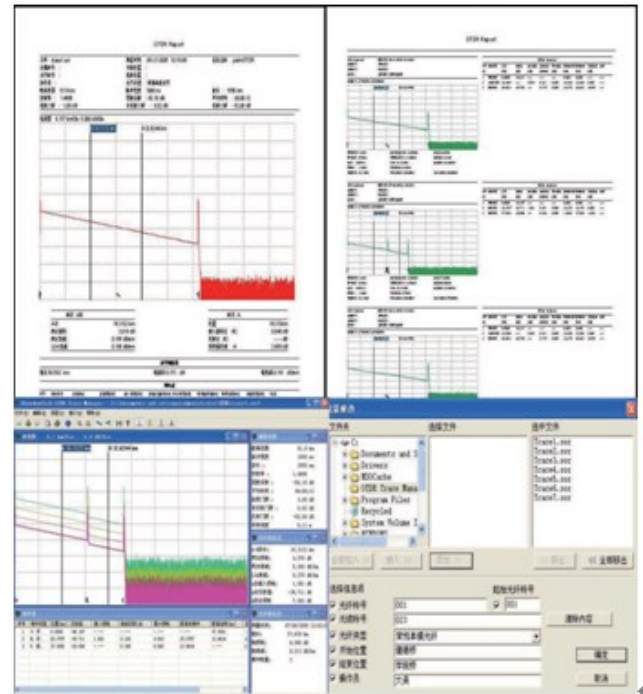
Link Image software helps technicians use an OTDR more effectively, without the need to understand or interpret OTDR results. It converts the graphic data points obtained from traditional single pulse trace into reflective or non-reflective icons which gives users a schematic view of the entire link.

- Icon-based fiber link view of all events
- Automatic pass/fail results
- Eliminates the need for OTDR expertise



## MTP Suite PC Software

- Multi traces analysis and comparison
- Batch editing and printing
- CSV report formats
- Remote control function (Optional)



## Network Remote Control Module (optional)

- Convenient networking
- Remote control instrument operation

## Optical Connector Inspector Module (optional)

- Focusing knob for fast focus
- Eye-safe and clear video viewing
- Interchangeable connector tips



## Stabilized Laser Source Module (optional)

- Wavelength same as the OTDR
- High precision and easy operation



## Optical Power Meter Module (optional)

- Multi-wavelength Calibration
- High Precision
- Convenient Operation



## Applications

- FTTx/PON Networks
- Local Area Networks (LAN)
- Metropolitan Area Networks (MAN)
- Long Haul Networks

## TECHNICAL SPECIFICATIONS

### GENERAL SPECIFICATIONS

Display	8- inch Color Touch Screen (800×480)
Connectivity	USB×2; 10/100Mbit/s RJ-45×1
Memory	8GB
Power Supply	Rechargeable Li-Ion Battery/AC Adapter
Battery Life	10 hours continuous operation
Working Temp.	-20°C - 50°C
Storage Temp.	-40°C - 60°C
Humidity	0 - 95% (Non-Condensing)
Weight	1.5kg
Dimensions (L×W×H )	235×159×75mm

OTDR Module	Wavelength (±20nm)	Dynamic Range (dB) <sup>(1)</sup>	EDZ (m) <sup>(2)</sup>	ADZ(m) <sup>(2)</sup>
MTP-200X-20VC	1310/1550	38/37	0.8	4
MTP-200X-20VD	1310/1550	45/43	0.8	4
MTP-200X-20VF	1310/1550	50/48	0.8	4
MTP-200X-31VCPL	1310/1550/1625	43/41/40	0.8	4
MTP-200X-33VC	1310/1550/1650	42/40/39	0.8	4
MTP-200X-40VC	850/1300/1310/1550	23/28/38/36	1	4.5/4.5/4/4
Selectable Range	SM: 1.3, 2.5, 5, 10, 20, 40, 80, 160, 240Km			
	MM: 1.3, 2.5, 5, 10, 20, 40Km			
Pulse Width	SM: 5ns,10ns, 30ns, 100ns, 300ns,1μs, 2.5μs,10μs, 20μs			
	MM: 5ns, 10ns, 30ns, 1μs, 2.5μs			
Averaging Time	Quick, 15s, 30s, 45s, 60s, 90s, 120s, 180s			
Emitter Type	LD			
Connector	FC/PC (Interchangeable SC, ST and LC )			
Distance Measure Accuracy	±(1m + 10 <sup>-5</sup> ×distance + sampling spacing)			
Attenuation Detect Accuracy	±0.05 dB/dB			
Reflection Detect Accuracy	±4 dB			
Visual Fault Locator	Output Power: ≥-3dBm	MOD Frequency: 1Hz	Detecting Range: 5Km	

### MCI100 Optical Connector Inspector Module (Optional)

Field of View	400μm×300μm
Resolution	≤1.5μm
Focusing	Manual Focus
Microscope Dimensions	Ø32×175mm

### LS100 Stabilized Laser Source (Optional)

Wavelength (±20nm)	Same as OTDR's
Output Power	≥-7dBm

PM100 Normal Power Meter Module (Optional)	
Calibrated Wavelength	850nm, 1300nm, 1310nm, 1490nm, 1550nm, 1625nm, 1650nm
Measurement Range	-70dBm~ +6dBm (-60dBm - +6dBm @ 850nm)
Detector Type	InGaAs
Display Resolution	0.01dB
Accuracy	± 5% ± 0.01nW (±0.5dB@850nm)

\*Specifications subject to change without notice

#### Notes

- (1) Dynamic range measurement at 20μs pulse width and 180s averaging time;  
(2) Dead Zone measurement at 0.6Km and reflection <-45dB; EDZ measurement at 5ns, ADZ measurement at 10ns.

## Order Information:

#### Standard Package

MTP-200X Host, Lithium Battery, CD (Software & User Manual), AC Adapter, Carrying Case, Warranty Card, Calibration Certificate

#### Optional Module:

LS100: Stabilized Laser Source Module (as OTDR)

PM100: Optical Power Meter Module

MCI100: Optical Connector Inspector Module

RC100: Remote control Module

LM100: Link Image Module

